

# BioStation A2

IP Fingerprint Terminal



Suprema BioStation A2 is the most advanced fingerprint access control and time attendance terminal featuring Suprema's next generation biometric technology and security platform. BioStation A2 provides class leading performance through World's best matching performance, uncompromised security and accuracy along with top-notch usability. Preloaded with BioStar 2, BioStation A2 operates as a web server which offers extra flexibility in system design for sites large or small.

### Features



#### World's Fastest Performance

- Powered by 1GHz iMX6 Quad-core CPU
- Up to 150,000 matches per second (1:N)
- Data transfer speed up to 5,000 users/min



#### Improved Accuracy & Security

- Up to 5x enhanced recognition performance
- New advanced LFD(live finger detection) technology
- Improved optical sensor and algorithm



#### Expanded Capacity

- Max. 500,000 users
- 5mil text logs/50,000 image logs
- Large memory: 1GB RAM+ 8GB Flash



#### Best-in-class Features

- 5" IPS LCD touchscreen with reinforced glass front
- 2MP wide-angle camera for clear face image logs
- Android O/S with improved GUI
- Videophone support/Extensive RF card options



#### Versatile Interfaces

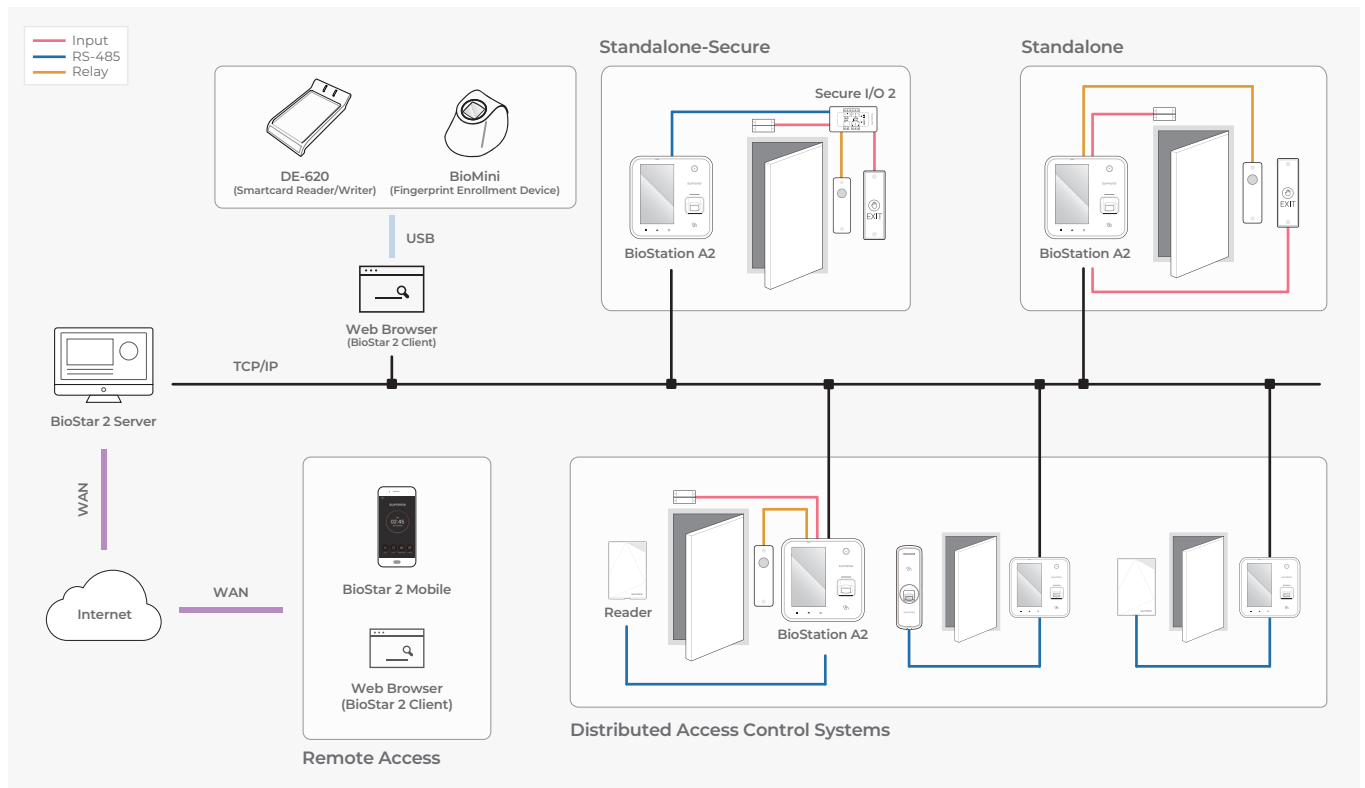
- TCP/IP, Wi-Fi, PoE(IEEE802.3af)
- USB host/OTG, SD card
- Wiegand, RS485, TTL I/O, relay

### Specifications

Biometric	Fingerprint			
Template	SUPREMA/ISO 19794-2/ANSI 378			
Extractor / Matcher	MINEX certified and compliant			
LFD	Supported			
RF Option	BSA2-OEPW	BSA2-OHPW	BSA2-OIPW	BSA2-OMPW
	125 kHz EM	125 kHz HID Prox	13.56MHz ICLASS SE/SR/Seos,NFC	13.56MHz MIFARE MIFARE Plus, DESFire EV1/EV2* Fel/Cal, NFC
CPU	1.0 GHz Quad Core			
Memory	1GB RAM + 8GB Flash			
Users (1:1)	500,000			
* Based on one finger enrollment per user				
Users (1:N)	100,000			
* Based on one finger enrollment per user				
Max. Logs	5,000,000(text), 50,000(image)			
LCD	5" IPS LCD with capacitive touchscreen			
LED	Multi-Color LED			
Sound	24 bit/Voice DSP (echo cancelation)			
Wi-Fi	Supported (IEEE 802.11 b/g)			
Interfaces	TCP/IP, RS485, Wiegand, TTL, Relays, USB			
SD Card	MicroSD up to 32GB*			
PoE	Supported (IEEE 802.3af compliant)			
Tamper	Supported			
Power	DC 12V			
Operating Temperature	-20°C - 50°C			
Operating Humidity	0% - 80%, non-condensing			
Camera	2 MP wide-angle (1600 x1200)resolution			
Dimension (W x H x D)	155 mm x 155 mm x 40 mm			
Unit Weight	440g			
Certificates	CE, FCC, KC, RoHS, REACH, WEEE			

\* DESFire EV2 cards are supported by having backward compatibility of DESFire EV1 cards.  
CSN and smart card functions are compatible with BioStation A2.  
\* The functions of the microSD card are available by customization only.

### System Configurations



#### Suprema Inc.

17F Parkview Tower, 248, Jeongjail-ro, Bundang-gu, Seongnam-si, Gyeonggi-do, 13554, Republic of Korea  
 T +82 31 783 4502 E sales\_sys@supremainc.com www.supremainc.com



For more information about Suprema's global branch offices, visit the webpage below by scanning the QR code.  
<https://www.supremainc.com/en/about/contact-us.asp>